

R E P O R T O F O P E R A T I O N A L
D A Y

wsl

MISSION No. **237**

Date: **24 MAR. 45**

TO: **TWENTE , HOLLAND**

TABLE OF CONTENTS

I. MISSION SUMMARY REPORT

- A. Narrative of Mission (with Supplementary Data)
- B. Formation Sheets (On Takeoff and over Target)
- C. Lead Navigators Narrative.
- D. Lead Navigators Log.
- E. Track Chart.

II. STATISTICAL SUMMARY OF OPERATIONS

- A. Statistics of Units Participating.
- B. Statistics of Bombing Run (WDAG Form 12E Modified)
- C. Communications Report.
 - (1) Navigational Aids Used.
 - (2) Equipment Failures.
- D. Flak Report.

401ST BOMBARDMENT GROUP (H)

REPORT OF OPERATIONAL

DAY

MISSION SUMMARY REPORT

II

MISSION # 237

DATE 24 March 1945

ASSIGNMENT

1. Assigned Target: TWENTE/ENSHEDE, HOLLAND (A/F)
2. Commitments: The 401st Group furnished the high squadron of 12 A/C for 94th composite group formation. A GH A/C was included. No spares.

EXECUTION

1. Target Bombed: TWENTE/ENSHEDE, HOLLAND (vis)
2. Squadron Leader: 1st Lt. A. E. ASCHENBACH
Lead Navigator: 1st Lt. W. R. BRAZZIL (DuBray-MO)
GH Navigator: 2nd Lt. S. BLANK
Lead Bombardier: 1st Lt. A. FOLKERTS

3. Flight Over England:

a. Takeoff:

Takeoff was normal - all ships took off successfully in the afternoon.

b. Squadron and Group Assemblies:

The squadron assembled rapidly and well over the Kings Cliffe buncher. The other two squadrons of the composite group formed well and the group departed the buncher complete, however, two minutes late.

c. Route Over England:

The route over England was normal and practically as briefed; Pt "D" was cut somewhat short so that the group passed CP 1 on time, on course.

MISSION SUMMARY REPORT () (t)4. Attack:a. Flight to Target:

The flight to the IP was as briefed. The low section of the squadron was experiencing some prop wash on an extra ship flying with the preceding squadron. The Air C.O. instructed the squadrons to take interval about 10 miles before the IP. The low squadron then dropped back and hence the high squadron took a couple of turns off course in order to follow them into the target.

b. Bombing Run:

The Air commander announced at the I^f that bombing would be visual, by individual squadrons. We uncovered and went in in trail. The lead squadron failed to bomb on the 1st run, and the low squadron dropped about 2 miles short of the airfield we were assigned to hit, so the high squadron was the first squadron of our group to bomb. There was smoke over the field so the lead bombardier couldn't see the actual MPI. till about 40 seconds before bombs went away but he had a general area located far back in the run. The GH operator helped get us started on course at the beginning of the run. Bombs were salvaged by the lead and dropped with a 100' intervalometer setting by the others. The AFCE was okay. Results were excellent and the runway was destroyed.

c. Flight from Target:

The lead squadron failed to drop, so the Air C.O. requested a 360° turn to be made at IP. However, the high squadron followed the low squadron after target - although they were pretty well ahead. The squadrons flew 30 miles North of course to wait for the lead, but then cut back and intercepted the briefed course home.

d. Return to Base:

Return was as briefed and uneventful - the squadron coming directly to home base. All ships landed safely.

e. Weather:

Weather was clear all the way in and out.

f. Fighter Support:

Fighter support was in evidence.

g. Comments on Formation and Interval:

Formation was generally good. Interval was about 10 miles going into the target.

h. Conclusions and Recommendations:

Very successful bombing results.

MISSION SUMMARY REPORT (Cont'd)

5. Aircraft Not Attacking:

All scheduled A/C attacked.

6. Enemy Opposition:

No enemy air opposition was seen or encountered. (See Flak Report for Flak)

7. Battle Damage:

Minor	Major	To Flak
4	0	4

8. Casualties:

None.

9. Statistical Summary of Operations: (See attached form)

10. Bombing Data:

a. Observations:

Bombing was excellent. The trail of bombs following the length of the assigned A/F runway. 95% of the bombs were within 2000', about 60% within 1000' of the asgnd MPI. (100' intervalometer setting)

b. Disposition of Bombs:

High Squadron: All 12 A/C attacked the target, dropping 240 X 250#M57 GP's.

c. Tabular Summary of Disposition of Bombs:

	Aircraft		Bombs				
	Over Target	Bombing	Number	Size	Type	Fusing Nose Tail	
Main Bombfall	12	12	240	250#	M57	1/10	1/40
Other Attacks	-	-	-	-	-	-	-
Total Bombs on Target			240	250#	M57	1/10	1/40
Other Expenditures			-	-	-	-	-
Bombs Returned			-	-	-	-	-
Total (Loaded on A/C Taking Off)			240	250#	M57	1/10	1/40

11. Lost Aircraft: None.

Submitted by:

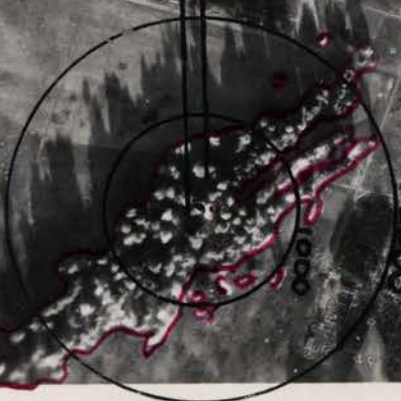
KEN W. DAUBLE
 Captain, Air Corps
 Statistical Officer



94CBN "A"
HIGH 59 - 401
PATTERN: 4488 X 931
ACTUAL MP: 240 SHORT
183 RIGHT
95 ft IN 2000
60 ft IN 1000
BOMB: LT FOLKERTS

Axis of Attack

ASSIGNED
RETURN
POINT



AFTERNOON DEAL

Combat Sq. Leader: **LT ASCHENBACH** Date: **24 March 1945**

Deputy Sq. Leader: **LT SPEER**

Deputy Gpt. Leader: _____

HIGH SQDN: 94th Ath Gp.

SQDN
613 SC JAWOCK
614 IN 1700
615 IW GOLFCLUB
616 IY BUZZARD

ASCHENBACH

IY G 8708(GH)

CAREY

SPEER

IN N 8862

IY P 6947

SQDN

SQDN

GRACRAFT

GEREN

IN G 1983

IW R 7780

BERNEBURG

LEVY

SMITH

BLOMGUIST

IN S 2947

IN O 1750

SC N 6506

SC J 7790

SMITH, S.R.

IN P 8758*

GRAY

JAMES

SC S 8680

SC X 7664

SPARES

GROUND SPARES

IN H 6113

HEADQUARTERS
FOUR HUNDRED FIRST BOMBARDMENT GROUP (H)
Office of the Navigation Officer

High Sq.

Date 24 March 1945

SUBJECT: Lead Navigator's Narrative of Raid on Twente, Germany

TO : Commanding Officer, 401st Bombardment Group (H), APO 557,
U. S. Army.

- 1. Flight plan and Log attached.
- 2. Track chart attached.
- 3. Narrative:

- a. T/O at 1451 hours.
- b. Group formed at 1542 hours on Kings Cliffs buncher.
at 11800 ft.
- c. Wing assembly was completed at 1540 hours at Wearford.
- d. Route over England was (not) flown as briefed.

e. Methods of navigation over England.

Gee, Pilotage, DR, Radio

- f. Division formation was joined at 1617 hrs. at Cromer.
- g. Flight to I.P. was (not) as briefed.

h. Methods of navigation to the I. P.

Gee, DR, Pilotage

i. Bomb run.

- (1) Actual I. P. was (not) as briefed.
- (2) True heading over target 150.
- (3) Actual drift DR.
- (4) Altitude over target 22900.
- (5) Time bombs away 1741.
- (6) Wind used for bombing 111/46.
- (7) Method of target identification.

Visual, Started GH

(8) Difficulties on bomb run.

None

(9) Weather over Target.

CAVU, slight haze.

(10) Axis of withdrawal 200.

- j. Group rally was accomplished at Did not rally at _____
- k. Wing rally was accomplished at _____ at _____
- l. Division rally was accomplished at _____ at _____
- m. Flight home was (not) as briefed.

n. Methods of navigation on return route.

Gee, Pilotage, DR

- o. Winds aloft were (not) called out to the formation.
- p. Fighter rendezvous were ~~(not)~~ as briefed.

q. Performance of equipment.

- (1) Mickey OK
- (2) Gee OK
- (3) Radio Compass OK
- (4) Fluxgate OK
- (5) Other equipment. OK

/s/ W. R. Brazzil
W. R. BRAZZIL
1st Lt., A. C.

Lead Navigator, High Sq.

PILOT Lt. Aschenbach, A. D.

NAVIGATOR

1st Lt. W. R. Brazzil

DATE 24 March 1945

STATIONS	131	ENCINES	1415	TAXI	1430	T.O.	1445
LEAVE BASE	Bu W.	1540					
COAST OUT		1617					
ENEMY COAST		1702					
I.P.		1721					
TARGET		1734					
ENEMY COAST		1812					
Eng. Coast		1851					

SUN		MOON		TWILIGHT	
Rises	Sets	Rises	Sets	AM	PM

2 Hr - 1730
 Ref alt - 20000
 Bomb alt - 22000
 Oxygen - 3:15

WATCH Fast Slow RATE secs/hour Gaining Losing
 At G.M.T. Div. assembly - Cromer to 52-45N 04-38E
 Letdown Cottismore Buncher

FROM TO	W/V UESD	HEIGHT	I.A.S. MPH /K	T.A.S. (K)	COU-RSE	DRI-FT	TRUE HDNG.	VAR.	MAG. HDNG.	G. S.	DIST.	TIME	E.T.A.	CELESTIAL DATA			
														TIME	BODY	ALT.	AZI.
52-34N 00-29W W Sleaford A	150/10	11000	150 -5	154	006	A9	015	A10	025	184	26	08 1/2 -2 1/2	1540 1546				
53-00N 00-25E	"	14000	150 -0	157	072	A14	086	A10	096	144	50	21 -1	1606				
53-15N 00-55E D	"	15000	" -13	162	143	A2	145	A10	155	123	25	12 -1	1617				
Cromer CP 1																	
52-56N 01-20E	144/40	22000	150 -22	173	095	A10	105	A9	114	144	121	50 -5	1702				
52-45N 04-38E	160/22	22000	150 -31	183	092	A7	099	A7	106	173	57	20 -1	1721	IP			
52-43N 06-12E IP	"	22000	"	"	137	-/3	140	A7	147	162	37	14 -1	1734	T.			
52-16N 06-59E. T.	"	"	"	"	189	-3	186	A7	193	163	11	04	1738				
52-05N 06-50E	"	"	"	"	300	-4	296	A7	303	199	14	04 A	1743				
52-12N 06-30E	"	"	"	"	340	0	340	A7	347	205	33	10	1753				
52-13N 06-12E	"	"	"	"	"	"	"	"	"	"	"	"	"				
52-15N 04-38E	"	22000	"	"	272	-6	266	A7	273	190	57	18 A	1812	Enemy Coast			
"	150/40	20000	170 A2	178	275	-11	264	A9	273	197	121	37 A2	1851	English Coast			
Cromer																	
Kings Lynn	150/35	2000	150 A2	134	250	-15	235	10	245	135	37	17	1908				
52-46N 00-24E Base	"	"	"	"	247	-15	232	10	242	134	39	17	1925	ETR			
Base Cromer	154/38	0 to 15000	150 A2	144	80	A15	085	10	095	136	75	33	1532 1617	45 min to climb			
Kings Cliff Cromer	150/40	11000	150 -10	158	072	A14	086	10	096	145	70	29	1548 1617				

FLIGHT RECORD

TIME	COURSE	W/V USED &/OR D.R. DRIF.	TRUE HDNG.	MAG. HDNG.	NAVIGATIONAL OBSERVATION	GENERAL OBSERVATION	I.A.S. MPH /K	HEIGHT & AIR TEMP.	T.A.S.	RUN		G. S.	TO RUN		E.T.A.
										DIST.	TIME		DIST.	TIME	
1413					Engines										
1451					Take Off, and headed to buncher W.										
1542					Formation completed										
1542					Departed Buncher, 2 min. late		150	11800 -4	157						
1542	009	150/40	018		S/C for Pt. A		"	"	"	186	26	8			1550
1548	"	"	"		3 mi. East Pt. A		"	"	"						
1548	073	"	087		S/C for Pt. D		"	"	"	144	50	21			1609
1552	068	144/34	082		P. 53-03N 00-09W		150	12700 -5	158	146	40	17			1609
1600	077	"	088		G. 53-09N 00-25E		14500	164 -10	164	148	20	8			1608
1606	077	"	088		Pt. D - 5 mi. short		15000	165 -11	165						
1606	157	"	155		S/C for CP 2		"	"	"	132	25	11			1617
1617	118	"	110		CP 1, on time, on course		15700	166 -12	166						
1617	085	"	095		S/C for CP 2		"	"	"	146	121	45			1702
1623	099	"	107		G. 52-59N 01-38E		16200	168 -14	168						
1629	085	178/58	107		G. 53-00N 02-04E		17000	169 -15	169	160	95	36			1705

FLIGHT RECORD

TIME	COURSE	W/V USED &/OR D.R. DRIF.	TRUE HDNC.	MAG. HDNC.	NAVIGATIONAL OBSERVATION	GENERAL OBSERVATION	IAS. MPH. /K	HEIGHT & AIR TEMP.	T.A.S.	RUN		C. S.	TO RUN		E.T.A.
										DIST.	TIME		DIST.	TIME	
1635	091	182/58 G.	112		G. 52-59N 02-31E		150	17500 -17	171			164	77	28	1703
1642	095	"	115		G. 52-56N 03-00E			19200 -20	176			163			
1648	103	160/45	112		G. 52-53N 03-22E			20000 -21	177			150	46	18	1706
1653	119	"	128		DR. 52-50N 03-32E			20700 -24	181			145	34	14	1707
1705	092		105		Coast In, CP 2. On course, 3 min late			22400 -28	187						
1705	082	"	096		S/C for IP			"	"			170	57	20	1725
1710	093	144/46 AF	104		P. 52-42N 05-18E			22700 -29	189			156	36	14	1724
1724	093	"	104		IP			"	"						
1724	117 298	"	123		A/C for Target			"	"			147	37	15	1739
1741	152	144/46	150		BOMBS AWAY. Flak meager, in accurate Twente Visual, results good			22900 -28	189			142			
1742	213	"	200		Axis of withdrawal										
1746	332 213	"	335		P. 52-22N 06-36E	Lead failed to drop Inst. to proceed to		22700 -28	189			234	26	7	1753
1753	332	"	335		P. 52-43N 06-12E	IP and do 360. Pilot following Low Sq.									
1759	335	"	335		P. 53-12N 06-03E	and going 30 mi. W. of course									
1759	244	"	290		A/C to intercept track			"	"						
1803	244		230		P. 53-00N 05-42E. Began letdown			22800 -28	189			191	26	8	1811
1812	"	"	"		P. Intercepted track										
1812	271	"	260		A/C for Coast		170	19400 -20	204			172	16	6	1818
1818	268	"	257		Coast out, on course			18500 -18	201						
1818	271	"	260		A/C for Cromer							225	141	48	1858
1824	277	"	267		G. 52-47N 04-00E		170	15500 -12	191			220			
1835	271	103/30 G.	269		G. 52-47N 03-01E			13000 -8	184			215	63	18	1853
1843	285	"	285		G. 52-53N 02-14E		177	10000 0	180			210	34	10	1853
1855	255	"	250		Coast in, Cromer		170	6000 -8	165						
1855	250		245		A/C for Base			"	"			189	74	24	1919
1901	250		245		P. 52-54N 01-08E			4500 A11	161			184			
1912			245		G. 52-50N 00-13E		190	3000 A14	179			197	37	11	1922
1925					Over Base.										
1929					Landed										

TRACK CHART

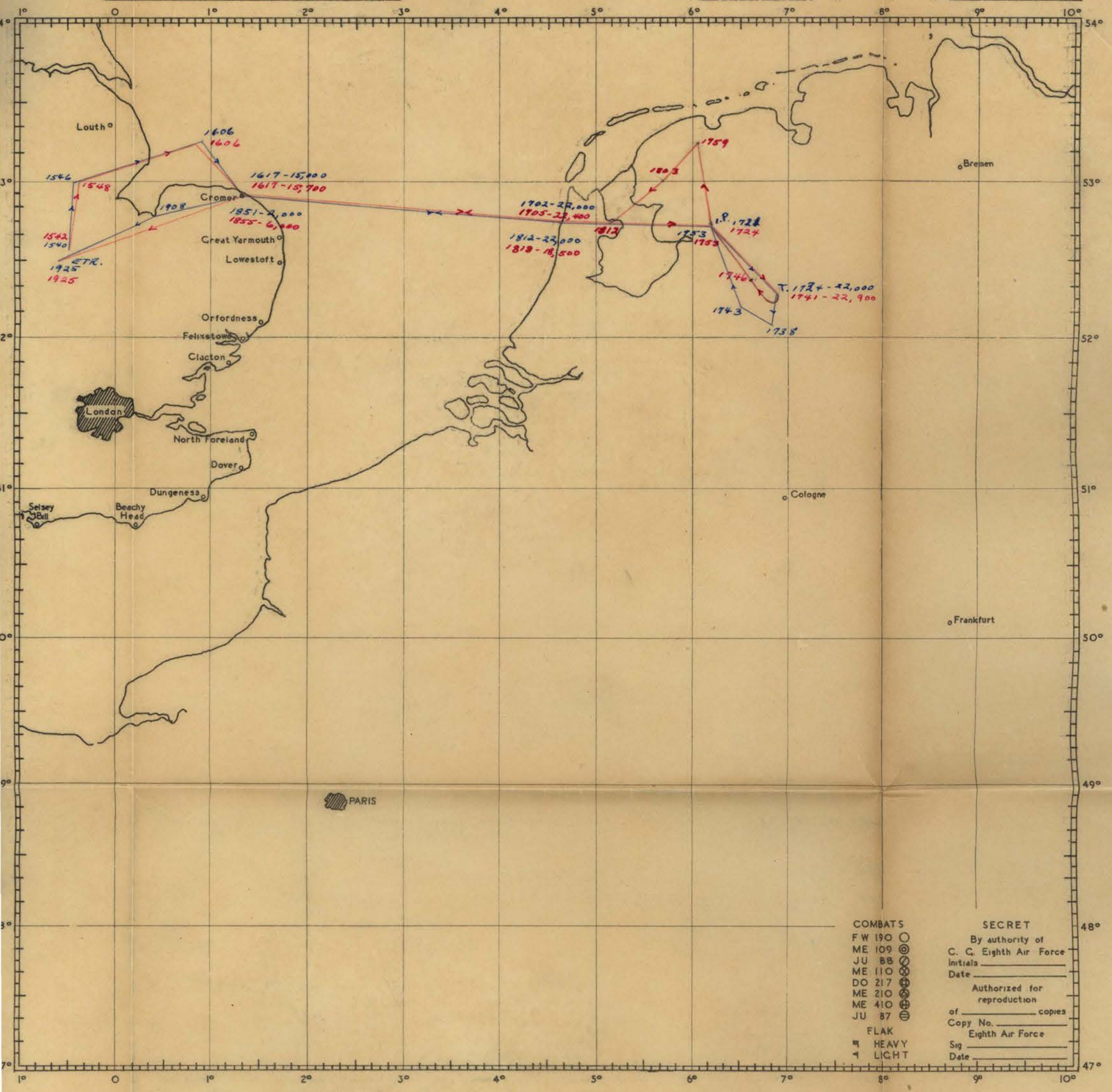
DATE March 24, 1942

Blue
Red

ROUTE FOLLOWED BY

Briefed
401st B.G.(H)

TARGETS
PRIMARY Twente, Holland



- COMBATS
- FW 190 ○
 - ME 109 ⊙
 - JU 88 ⊙
 - ME 110 ⊙
 - DO 217 ⊙
 - ME 210 ⊙
 - ME 410 ⊙
 - JU 87 ⊙

- FLAK
- ☐ HEAVY
 - ◄ LIGHT

SECRET

By authority of
C. C. Eighth Air Force

Initials _____
Date _____

Authorized for
reproduction
of _____ copies

Copy No. _____
Eighth Air Force

Sig _____
Date _____

STATISTICAL SUMMARY OF OPERATIONS

401st Bomb Group (H)

1st AD P. O. 667

Date of 24 March 1945

PART I - ATTACKS & RESULTS

94th Group

	High	Borrowed A/C	Borrowed A/C	Borrowed A/C
1. No. of A/C Failing to Take Off	---			
2. No. of A/C Sorties	12			
3. No. of A/C Sorties less Unused Sp	12			
4. No. of A/C Credit Sorties	12			
5. No. of Effective Sorties	12			
6. No. of Non-Effective Sorties	---			
(a) Early Returns Included				
7. Name of Primary Target		TWENTE/ENSCHEDÉ, HOLLAND (VIS)		
(a) No. of A/C Attacking	12			
(b) No., Size, Type of Bombs	240X250#GP			
8. Name of Secondary Target				
(a) No. of A/C Attacking				
(b) No., Size, Type of Bombs				
9. Name of Last Resort Target (LRT)				
(a) No. of A/C Attacking				
(b) No., Size, Type of Bombs				
10. Name of Target of Opportunity				
(a) No. of A/C Attacking				
(b) No., Size, Type of Bombs				
11. Name of Target of Opportunity				
(a) No. of A/C Attacking				
(b) No., Size, Type of Bombs				
12. No. of A/C MIA - TOTAL	None			
13. No. of A/C MIA - Flak				
14. No. of A/C MIA - Flak and E/A				
15. No. of A/C MIA - Enemy Aircraft				
16. No. of A/C MIA - Accident over E.T.				
17. No. of A/C MIA - Other & Unknown				
18. Time of Take Off	1451			
19. Time of Attack	1741			
20. Total Time for Mission	58.0			
21. Altitude of Release	22,900			
22. Type of Sighting (Vis, H2X, GH, etc)	VIS			
23. Enemy Resistance -- AA Inten & Acc	Meager Inacc.			
24. Enemy Resistance - Fighters	---			
25. Enemy Resistance - Bombers	---			
26. U.S. A/C Engaged by Enemy A/C	---			
27. No. of Passes made by Enemy A/C	---			
28. Degree of Success	Excellent			

A/C borrowed from Groups None

A/C loaned to Groups:

STATISTICAL SUMMARY OF OPERATIONS

401st Gp Mission # 237

Date 24 March 1945

PART II - NON-EFFECTIVE SORTIES

94th TH Group

	High	Borrowed A/C	Borrowed A/C	Borrowed A/C
29. Non-Effective Sorties	None			
(a) Weather				
(b) Personnel				
(c) Enemy Action				
(d) Other Non-Mechanical				
(e) Mechanical & Equipment				
30. Mechanical & Equipment Failures				
(a) Engine				
(b) Oil System				
(c) Fuel System				
(d) Supercharger				
(e) Propeller & Governor				
(f) Communication System				
(g) Guns & Turrets				
(h) Bomb Release				
(i) Bombay Doors				
(j) Electric System				
(k) Instruments				
(l) Oxygen Equipment				
(m) Bomb Sights				
(n) A/C in General				

31. Reasons for Failure to Attack: **None**

W.D.A.G. FORM
 12 E. Modified
 1-9-44 401st BG APO 557

COMBAT BOMBING FLIGHT RECORD

BOMBARDIER LT. FOLKERTS DATE 24 March 1945

PILOT LT. ASCHENBACH TAKE OFF 1452

NAVIGATOR LT. BRAZZIL AIRPLANE _____

WING 94th GROUP 401st SQDN. High LANDED 1932

OBJECTIVE TWENTE/ENSHUDE, GERMANY (MPT)

METHOD OF ATTACK X
Individual Flight Squadron Group wing

NUMBER A/C IN GROUP 12 COMPOSITE GROUP _____

DEFLECTION AND RANGE SIGHTING GROUP Lead A/C COMPOSITE GROUP _____

NUMBER A/C DROPPING BOMBS BY OWN SIGHTING OPERATION: 1 A/C

BOMBS, TYPES AND SIZES 250# GP FUSING: NOSE 1/10 TAIL 1/40

BOMBS, TYPES AND SIZES _____ FUSING: NOSE _____ TAIL _____

NUMBER OF BOMBS LOADED 240 RELEASED 240

INFORMATION AT RELEASE POINT:

Altitude of Target 100 Temp Aloft: Metro -31 Actual -23

True Altitude above target 23210 Mag Head, order 147 Actual 157

Ind. Altitude 22900 True Heading 150

Pressure alt of target -182 Drift, Est 2R Actual 2L

Altimeter setting 29.92 True Track 148

C.I.A.S. 160 I.A.S. 215 Actual Range 9744

G.S. Est 187 Actual 190 B.S. Type M-9

Wind Direc Metro 160 Actual 144 Time of Release 1741

Wind Veloc. Metro 25 Actual 53 Intervalometer Setting 100ft

D.S. 130.85 Trail 41.5 ATF 40.81 Length of Bombing Run 17 min

Tan. D.A. Est .42 Actual .42 C-1 Pilot OK A-5 ---

Mean Temp: Metro -6 Actual -5 Manual Pilot ---

Type of Release: Lead A/C Salvo Type of Release: Other A/C 100ft

I certify that the above figures have been checked and are correct.

MILES R. BUSSE
 1st Lt. Air Corps
 Asst Group Bombing Officer

SECRET

REPORT ON A.A. GUNFIRE.
401 BOMBARDMENT GROUP (HV)

ASSIGNED Twente/Enschede, Holland.....

DATE OF MISSION. 24 Mar '45

1. TARGET: BOMBED. Twente/Enschede, Holland.....

2. ROUTE AS FLOWN:

Generally as briefed.

3.	AT TARGET	ENROUTE
WEATHER - - -	<u>CAVU</u>	<u>CAVU</u>
CONTRAILS - -	<u>None</u>	<u>None</u>
SEEN-UNSEEN -	<u>Seen</u>	<u>Seen</u>

4. DESCRIPTION OF FLAK AT TARGET:

Meager, accurate tracking, approximately 2 minutes duration.

5. FLAK ENCOUNTERED OR OBSERVED ENROUTE: (IN ORDER EXPERIENCED)

None

6. CHAFF; HOW DISCHARGED:..... None Carried.....

7. POSITION OF GROUP:..... 94th "A" - High Squadron - 3rd.....

8. DETAILS:-

SQDN; PCS.	NO. A/C	DAMAGE		A/C LOST TO				AXIS OF		TIME OVER TARGET	HEIGHT
		MAJ.	MIN.	AA	EA	ACC	UK	ATTK	WITH		
<u>High</u>	<u>12</u>		<u>4</u>					<u>150°</u>	<u>200°</u>	<u>1741</u>	<u>22,900</u>
TOTALS	<u>12</u>	<u>0</u>	<u>4</u>	<u>0</u>	<u>0</u>	<u>0</u>	<u>0</u>				

9. COMMENTS - PHENOMENA:-

Lt. P. R. Myers.

CONFIDENTIAL

HEADQUARTERS
 401ST BOMBARDMENT GROUP (H)
 Office of the Communications Officer
 AAF Sta 128, APO 557

J-A-3/3

413.44

24 MARCH 1945

SUBJECT: Communications Report, Operational Mission No 237. (Field Order 667)

TO : Commanding Officer, 401st Bomb Gp (H), AAF Sta 128, APO 557.

SECTION ONE - USE OF RADIO NAVIGATIONAL AIDS

1. Radio Beacons used:		2. MF/DF Fixes	<u>0</u>
a. MF Beacons	<u>0</u>	3. HF/DF Bearings (QDM's)	<u>0</u>
b. Bunchers, England	<u>12</u>	4. VHF/DF Homings	<u>0</u>
c. Bunchers, Continent	<u>0</u>	5. Distress Action (SOS's)	<u>0</u>

SECTION TWO - USE OF RADAR

	<u>Airborne</u>	<u>Used</u>		<u>Airborne</u>	<u>Used</u>
1. Gee	<u>12</u>	<u>12</u>	4. Gee-H	<u>1</u>	<u>1</u>
2. H2X	<u>1</u>	<u>1</u>	5. Carpet (Barrage)	<u>10</u>	<u>10</u>
3. Micro-H	<u>0</u>	<u>0</u>	6. Carpet (Spot)	<u>1</u>	<u>1</u>
7. Total aircraft releasing Chaff				<u>NONE</u>	
8. Total number of units released				<u>NONE</u>	

SECTION THREE - ACTUAL DEFICIENCIES BY EQUIPMENT

1. Interphone	<u>1</u>	7. Gee	<u>0</u>
2. VHF	<u>0</u>	8. H2X	<u>0</u>
3. Compass	<u>0</u>	9. Micro-H	<u>0</u>
4. Liaison	<u>0</u>	10. Gee-H	<u>0</u>
5. Command	<u>0</u>	11. Carpet (Barrage)	<u>0</u>
6. SCS-51	<u>0</u>	12. Carpet (Spot)	<u>0</u>

SECTION FOUR - REMARKS

Harold M. Kennard Jr.
 HAROLD M. KENNARD, JR.
 Maj, A C,
 Gp Com O.

CONFIDENTIAL

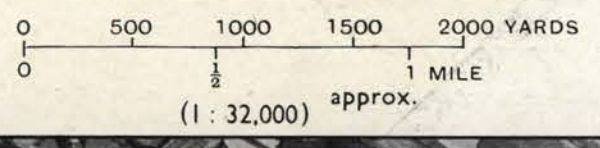
#1. Dis.

Target No.
S. 65

AIRFIELD — TWENTE/ENSCHEDÉ (HOLLAND)
Lat. 52° 16' N. Long. 06° 53' E.

Illustration No.
S. 65/6

Photographed 3 August 1944



Issued October 1944



A.I.3c(1)

TYPE A

Illustration No.
S. 65/6

Lead Squadron, 94th B Group

Combat Sq. Leader: Lt Col WHITE Date 24 March 45

Deputy Sq. Leader: Lt BODDIN

Deputy Gp. Leader: Lt BODDIN

613 SQDN

612 SC JAWOCK
613 IN MACRO
614 IN GOLFCOLUB
615 IY BUZZARD

STRAUSS (WHITE)

~~Ix S 8883 (PTF)~~

J 8825

BRADLEY

IN F 6313

BODDIN

~~IY O 8153 (PTF)~~

N 8648

615 SQDN

613 SQDN

JONES

IN C 8160

KELSO

IN V 6842

SHEPHERD

IN A 8456

MAHARICK

IN J 1591

LITCHFIELD

IN B 6182

MC KENNY

IN W 8767

NIELSEN

IN D 6883 RCM

MAY

IN U 706 RCM

YOUNG

IN E 8146

PTF Spare Lead IY D 8650, runway 33
Visual Spare Lead IY P 8947, Disp 23

Ground Spares: IN G 1983 Disp 41
SC H 6806, Disp 14

0700-1300 GRR
1300-1900 RR

12 500 S. P's
 $\frac{1}{10} - \frac{1}{40}$

94th B GROUP LOW SQUADRON

Combat Sq. Leaders: CAPT HARB Date: 24 Mar 45

Deputy Sq. Leaders: LT BENNETT

Deputy Gp. Leaders: LT BODDIN

612 SQDN

- 612 SC JAWOCK
- 613 IN MACRO
- 614 IW GOLFULUB
- 616 IY BUZZARD

HOLE (HARB)
A 8812
IY N 8648 PFF
J 8825

ANLERS
SC P 1. 21

BENNETT
IY Q 9.48

612 SQDN

612 SQDN

CAMPBELL
SC K 8733 Spot

MARTIN
SC M 7089

2-6-12-24

SPENCE
SC T 8788 Spot
long Delay

HOWARD
SC B 1662

HARVESON
SC R 2898

STEPHENS
SC O 7115

NOLAN
SC H 2398

HOLE
SC D 6992

GUYLER
SC F 8541

SPARES

- PFF IY D 8550 Run 85
- VIS IY P 6947 Disp 85
- RBG IN G 1983 Disp 41
- ~~SC H 8500 Disp~~
- SC W 6506 Disp 14

High Squadron, 94th B Group

Combat Sq. Leader: Capt HAYES Date 24 March 45

Deputy Sq. Leader: Lt KNOWLES

Deputy Gp. Leader: Lt BODDIE

614 SQDN

612 SC JAWOCK
614 IN MACRO
614 SW GOLFCUB
615 IY BUZZARD

HAYES

IY C 8033 (PFF)

M 8707

PARK

IW B 7151

KNOWLES

IY L 8941

614 SQDN

614 SQDN

BARCOCK

IW X 8565 RCM

DJERNES

IW S 2468

CAMERON

IW D 7322

HOLMES

IW F 7395

STERMAN

IW P 2012

LINDSEY

IW Q 7478

STAUFFER

SC V 8810 RCM

SALISBURY

IW H 8077

AYRE

IW A 7931

SPARES

Spare PFF Lead IY D 8550, Dutyway 23
Visual Spare Lead IY P 6947, Disp 23

Regular Ground Spares: IW G 1983, Disp 41
SC N 6506, Disp 14

High School, Year 2 Group

Number of Lectures: _____
Date of March 48 _____
Number of Lectures: _____
Number of Lectures: _____

ALL BY BUREAU
ALL BY BUREAU
ALL BY BUREAU
ALL BY BUREAU

ALL BY BUREAU

ALL BY BUREAU

IT C 100 (177)

M - 8307

IT F 0041

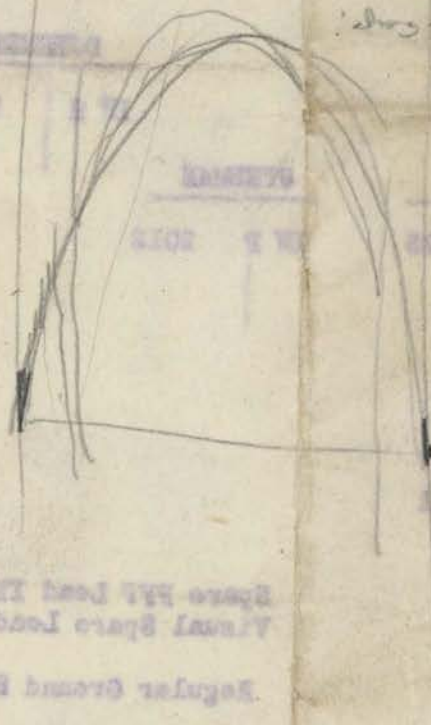
ALL BY BUREAU

ALL BY BUREAU

ALL BY BUREAU

ALL BY BUREAU

ALL BY BUREAU



- 1982 - Bomb Bay
- 148 - Long Com.
- 842 - 1/2 inch diameter
- 132 - 2 inch diameter
- 1988 - #6 L. 5/16. Pt. 2. 1/2 inch diameter

Bomb Bay door motor cover.

1925

Regular Ground Spares: IN 0 1003, Diag 21
Special Spares Lead IX 0 0047, Diag 22
Special Spares Lead IX 0 0048, Diag 23

DATE: 24 March

DUTY OFFICER: Lt Sutherland

BRIEFING OFFICER: Capt Hamrick

710-1445
ETR-1925

1. TARGETS AND MPI'S FOR:

a. 1st AD

(1) 401st Bomb Group:

Primary: Twente/Enschede (5216-0653) Visual only —

A very active A/F which is in operational condition.

A large number of E/A have been using this field. PRO ^(very large print) on Mar 22nd showed 18 aircraft on field — MPI designed to port hole field —

Other three groups have separate MPI's on same field —

13 Groups went out earlier today from 1st AD to attack 6 other A/D's — total 17 Gps from 1st AD today —

Secondary: None — attack by visual methods only.

If target cannot be attacked by visual methods BOMBS WILL BE RETURNED TO BASE — Bomb Bay opened at 1.P. only.

Last Resort:

(2) Other Groups in 94th CBW:

41-A

1-A

94-A

40-A

(3) Order of Bombing and Targets of other units in 1st AD: Same

Target - 41A, 1A, 94A (401st Hi Sq) —

b. 2nd AD: 6 Gp attack Stormede (5137-0828) Kirtorf (5048 0905) at 0 hours — 7 Gp in same area as 1st AD this A.M.

c. 3rd AD: 3 Gp attack Lippe (5043-0505) at 0 hours 13 Gp in same area as first mission this AM

2. ROUTES (ALL THREE AD'S)

a. Points and Times of Departure from English Coast:

b. Fighter Support:

12 Gp Area Support } all P-51's
2 Gp Free Lance }

3. ANTICIPATED ENEMY OPPOSITION:

a. Flak: 34 Guns in Area - all in range -
Four guns on route back (AVO10) -

b. Enemy Fighters: - Weather very favorable for E/A -
expect T/E Jet and S/E activity if tactical
air force comes up -

c. Smoke Screens: - None known - not likely -

d. Camouflage: - none known -

4. INSTRUCTIONS TO UNITS:

a. Wing Assembly: KINGS CLIFFE - Buncher - Lead 11,000 ft.

b. Air Commanders: Col Preston (Division
Wing - Lt. Col. Stewart -
401 - Lt. ASCHENBACH

c. Zero Hour and Date: 1730 hr - 24 March

d. General Instructions Pertinent to Entire Task Force: Bomb alt 22000
Base Ref alt 20,000 - Interval 2 min - Start run as G-11 but do
not release except visual - 2 run at option of Gp leader -
Do not open bomb bay doors before LP.

5. SUPPLY:

a. Gas Load: _____

b. Bomb Load (and Intervalometer Settings) 20x250 GP - 100ft interval
One a/c each gp. delayed fuses 2/6/12/24 hrs

c. Chaff Load (Point and Time of Commencing Discharge) _____
no chaff

d. Screening Force: _____

6. COMMUNICATIONS:

a. Flares and Lamps: _____

b. VHF and Other Radio: (provide Force Information) _____

7. SPECIAL INSTRUCTIONS:

a. Evasion and Escape: _____

b. S.O.P.'s _____

c. Miscellaneous: _____

d. Security: _____

Spas approach
chromer as follows
~~5745~~ -
41 - Watter
1 - Downham Market
94 - (5315-0055E)
40 - Kings Lynn

Emergency Landings
If unable to make B 53
do not try forward a/7
but crash land just
off the field.

S E C R E T

613TH BOMBARDMENT SQUADRON (H)
 OFFICE OF THE OPERATIONS OFFICER
 AAF STATION 128, APO 557

24 March 1945

S-E-C-O-N-D M-I-S-S-I-O-N

PLANE NO	DUTY	RANK	LAST NAME	FIRST NAME	MI
42-102947	P	F/O.	BERNEBURG	LAVERNE	L.
	CP	2nd Lt.	FUNK	PHILIP	B.
	N	2nd Lt.	HEUSCHER	CLIFTON	J.
	B	Sgt.	BAILEY	FRANK	W.
	RO	T/Sgt.	FERGUSON	HUGH	R.
	TT	Sgt.	BUSCH	WILBUR	E.
	BT	Sgt.	BACKUS	MARVIN	L.
	TG	Sgt.	KEY	CHARLES	W. JR.
	WG	Sgt.	DICK	CHARLES	B.
43-38758	P	2nd Lt.	SMITH	SAMUEL	B.
	CP	2nd Lt.	MILLER	WALTER	A.
	N	F/O.	ANDLER	LYLE	E.
	B	Sgt.	RECKENS	RUSSELL	E.
	RO	Sgt.	HERCHENROETHER	RAYMOND	A.
	TT	Sgt.	DILZ	REINHOLD	J.
	BT	Sgt.	MEDOW	MILES	H.
	TG	Sgt.	WORSIMAN	ROBERT	J.
	WG	Sgt.	HOOD	CLYDE	L.
RCH	Sgt.	STITT	JOHN	J.	
43-38862	P	1st Lt.	CAREY	KARL	F.
	CP	2nd Lt.	FREN	JAMES	R.
	N	2nd Lt.	JOHNSTON	WILLIAM	I.
	B	S/Sgt.	PAPAZIAN	STEPHEN	A.
	RO	T/Sgt.	FLYNN	IEO	M.
	TT	T/Sgt.	JONES	CHARLES	C.
	BT	S/Sgt.	SMITH	DONALD	E.
	TG	S/Sgt.	ODOM	HENRY	T.
	WG	S/Sgt.	FISHER	MELVIN	C.
42-31730	P	2nd Lt.	LEVY	MEYER	NMI
	CP	2nd Lt.	SOUTH	VEEDER	NMIJR
	N	2nd Lt.	HUNT	CALVIN	T.
	B	Sgt.	GROSSLEY	CHARLES	A.
	RO	Sgt.	LAUDERDALE	WILBUR	C.
	TT	Sgt.	LESHER	DAVIS	M.
	BT	Sgt.	NICHOLAS	MIKE	S.
	TG	Sgt.	HUDSON	JOHN	W.
	WG	Sgt.	FOLEY	ROBERT	J.
42-31983	P	1st.	CRACRAFT	GEORGE	K. JR.
	CP	2nd Lt.	LUNDGREN	ROBERT	P. 612
	N	2nd Lt.	PATRICK	DALE	L. 615
	B	S/Sgt.	GUERIN	ROLAND	L.
	RO	T/Sgt.	FENWICK	GORDON	E.
	TT	T/Sgt.	GOBHART	CHARLES	R. 612
	BT	S/Sgt.	CERUBINI	PETER	J. 612
	TG	S/Sgt.	HUDSON	LEONARD	L.
	WG	S/Sgt.	BAKER	RICHARD	E.
42-97780	P	2nd Lt.	GEREN	THURMAN	N.
	CP	2nd Lt.	COLLISS	EUGENE	E.
	N	2nd Lt.	SIMS	MORTON	D. 612
	B	Sgt.	ELY	CALVIN	P. 615
	RO	S/Sgt.	SITTON	WILLIAM	C.
	TT	Sgt.	SWIFT	GENE	E.
	BT	S/Sgt.	GRUMANN	JAMES	F. 615
	TG	S/Sgt.	MORRISON	Julius	J.
	WG	S/Sgt.	HARLEN	JAMES	J.

SIX HUNDRED AND FOURTEENTH BOMBARDMENT SQUADRON (H)
FOUR HUNDRED AND FIRST BOMBARDMENT GROUP (H)
Office of the Operations Officer

AAF Station # 128.
24 March 1945.

SUBJECT: Loading List.

TO : Operations Officer, 401st Bomb Gp (H), AAF Station # 128, APO # 557.

1. The following is the loading list for today's mission:

Plane 43-38680

P	2nd Lt.	GRAY, CARL M.	614th Sq.
CP	2nd Lt.	SMITH, CHARLES	"
N	2nd Lt.	STEWART, RICHARD E.	"
CTG	Sgt.	Ginthwain, Edward A.	"
RO	Sgt.	Fort, Collins G.	"
TT	Sgt.	Kirby, Lee D. Jr.	"
BT	Sgt.	Harrell, Jean F.	"
TG	Sgt.	Saenz, Hector J.	"
WG	Sgt.	Bonanno, Joe M.	"

Plane 42-97664

P	2nd Lt.	JAMES, HERBERT W.	"
CP	2nd Lt.	PARKER, VICTOR W.	"
N	2nd Lt.	MENZEL, GEORGE H.	"
CTG	Sgt.	Branch, Willard A.	"
RO	Sgt.	Kent, Donald R.	"
TT	Sgt.	Parker, Robert S.	"
BT	Sgt.	Toloso, Melvin N.	"
TG	Sgt.	McClon, Lynn G.	"
WG	Sgt.	Baumann, Archie M.	"

For the Squadron Commander:

DONALD V. KIRKHUFF
Capt., Air Corps,
Operations Officer.

SIX HUNDRED AND FIFTEENTH BOMBARDMENT SQUADRON (H)
 FOUR HUNDRED AND FIRST BOMBARDMENT GROUP (H)
 Office of the Operations Officer
 AAF - Sta - 128 - APO - 557

24 March 1945

SUBJECT: Loading List.

TO : Operations Officer, 401st Bomb Gp (H), AAF Sta 128, APO 557.

1. Following is the list of Combat Crews participating in today's mission.

PLANE # 44-8708

DUTY	RANK	LAST (NAME)	FIRST	(MI)	SQUADRON
P	1st Lt.	Aschenbach	Allen	E	615th
CP	1st Lt.	Althoff	John	R.	"
N	1st Lt.	Brazzil	William	R.	"
G/H	2nd Lt.	Blank	Samuel	(NMI)	"
B	1st Lt.	Folkerts	Arthur	(NMI)	"
RO	T/Sgt.	Feigenbaum	George	J.	"
TT	T/Sgt.	Herndon	William	R.	"
TG	S/Sgt.	Wilson	Ben	G.	"
FG	S/Sgt.	Watson	Robert	W.	"
M/O	1st Lt.	DuBray	Joseph	J.	"

PLANE # 44-6947

P	2nd Lt.	Speer	Kenneth	D.	615th
CP	2nd Lt.	Spellman	John	W.	"
N	2nd Lt.	Simon	Robert	M.	"
B	1st Lt.	Scanlon	William	M.	"
RO	S/Sgt.	Reiss	Herbert	(NMI)	"
TT	S/Sgt.	Cupp	Gordon	G.	"
BT	Sgt.	Gross	William	D.	"
TG	Sgt.	Thompson	Leonard	E.	"
FG	Sgt.	Averett	Jack	C.	"

N	2nd Lt.	Patrick	Dale	L.	flying with 613th
BT	S/Sgt.	Grumann	James	F.	flying with 613th
FG	Sgt.	Ely	Galvin	P.	flying with 613th

- E N D -